

Risk Stratification

Identifying At-Risk Patients for Intervention

› What is DRVS Risk Stratification?

Azara has developed a risk stratification algorithm that is available in DRVS to assist with the consistent identification of high risk patients within or across its client health centers. The risk stratification uses diagnostic and clinical data – age, chronic, behavioral health, infectious disease and substance use conditions, social determinants, clinical outcome indicators, medications, and utilization – to identify those patients at risk who might benefit from care management monitoring and intervention by center staff and programs. Patients are stratified into a high, moderate or low risk category which can be utilized across the DRVS platform in Dashboards, Reports, Registries, Patient Visit Planning, Care Management Passport and quality measures.

› Risk Algorithm Development and Implementation

Azara's clinical team will work closely the individual center or network population health and clinical specialists to develop and implement an algorithm customized to your population needs. Azara starts with the DRVS standard algorithm and adjusts the criteria to identify the top 5% or highly complex and 10% moderately complex patients. Azara will provide training on use of risk that is geared to meet your programmatic needs making successful implementation an easy process.

› What's the Value of a Risk Algorithm?

- ⚙ Efficient and consistent identification of patients that are costly, needy or could benefit from care coordination.
- ⚙ Support risk stratification requirements for NCQA PCMH recognition, ACOs and other population health management programs.
- ⚙ Simplify matching the right resources to the patients need.
- ⚙ Provides insight into provider panels and comorbidities of specific patient populations.
- ⚙ Compare risk distribution across health centers (Network Risk Algorithm).
- ⚙ Facilitate conversations with payers and funders with regards to patient risk.
- ⚙ Inform population health program development.
- ⚙ Monitor program performance and success of the high-risk populations.

➤ Where Will Risk Stratification be Available?



REGISTRIES

- View Risk Details
- Create Cohorts for Tracking



DASHBOARDS

- Patient Counts
- Risk Distribution



REPORTS & MEASURES

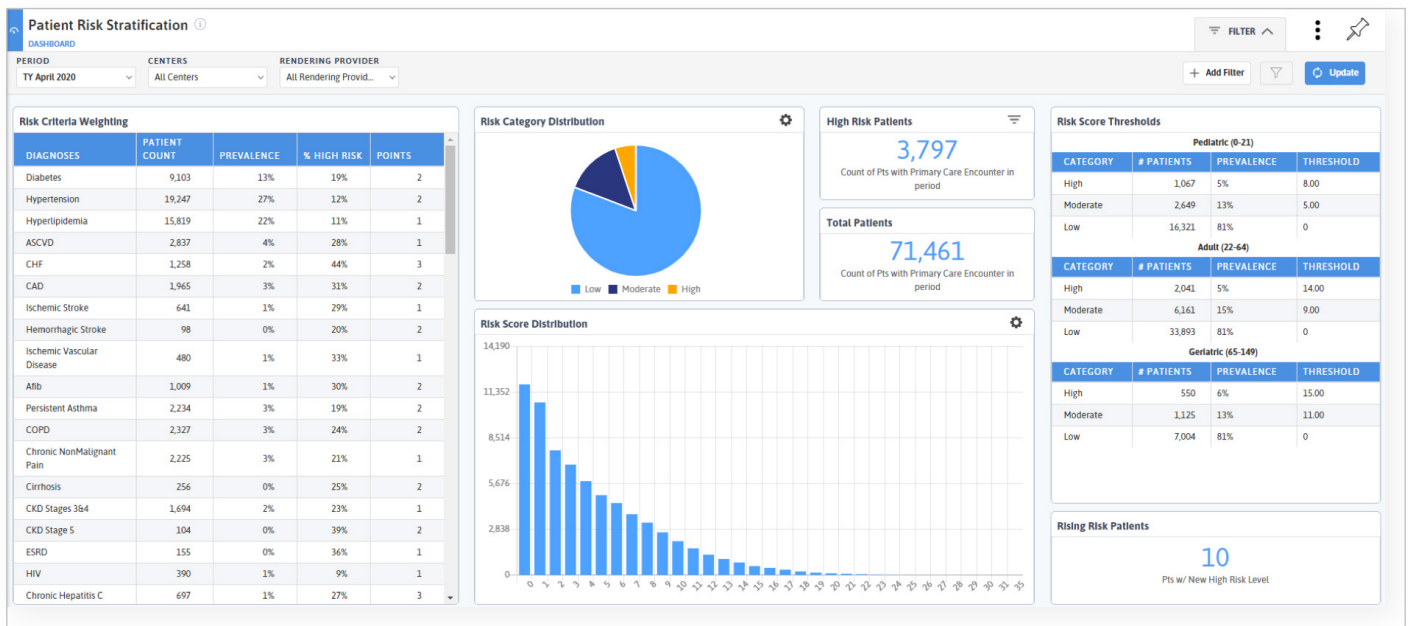
- Patient Visit Planning
- Care Management Passport
- Panel Size
- Risking Risk



RISK FILTER

- Available Across Application
- Apply to All

➤ Sample Risk Stratification Dashboard



Interested in learning more about Azara Risk Stratification?

Risk Stratification for DRVS requires additional mappings.

Contact your PCA, HCCN, your Azara Account Rep or support@azarahealthcare.com

Check out DRVS Help for a list of the risk criteria and webinars on Risk in DRVS.